

NESTLE – CHALLENGE FRANCE



ALPS AUTOMATION
Chemin de Cibleries 3
1896 VOUVRY
Switzerland

Phone +41 24 482 06 50

www.alpsautomation.ch

Strengths :

- Professionalism
- Standards
- Flexibility
- Friendliness

Formerly known under the name of Maggi, the Nestlé factory (since 1947) has become one of the principal suppliers of milk-based preparations for Nescafé Dolce Gusto pods. Consequently, Ardennes milk is present in 74 countries throughout the five continents.

The launch in 2009 of one of its major innovations – coffee capsules – transformed the Challenge factory in the Ardennes into a centre of excellence for milk powders. This localisation is explained by the very high quality of the region's milk.

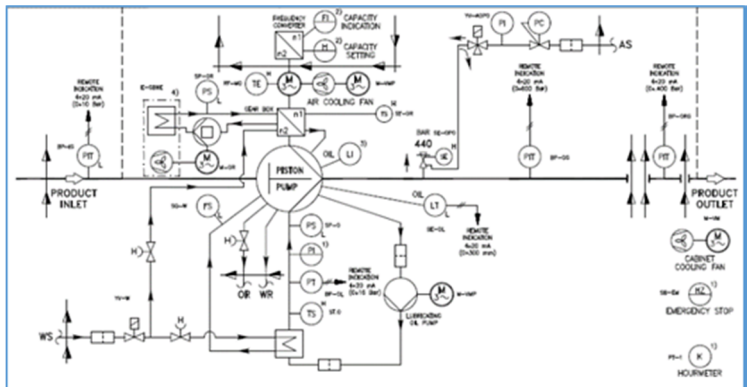
The production centre, located on a surface of 47.000 m², employs a staff of around a hundred. In 2014, Nestlé decided to invest 12 million euros to equip itself with a second evaporator. As of 2016, this investment makes it possible to increase by about 50% the annual production of milk-based powder, and to create around ten new jobs. The company processes 80 million litres of milk per year, sourced from over 200 local producers.



The SpeedyPROJECT

Nestlé Challenge called upon ALPS Automation, whose expertise in evaporators is recognised internationally. Their teams took care of:

- Training Challenge's automation engineers in the use of the Nestlé toolbox (Nestlé Engineering Automation Toolbox 6.0)
- Providing an Evaporator software specialist for a technical discussion based on the latest flowsheet and to exchange ideas on this project
- Migration of an existing software system to the Nestlé standards
- Development and commissioning of the software of the Evaporator
- Management of the project



Alain Galli, Engineering Lead, Nestlé France, gives the following feedback: 'I reviewed the Speedy project and the performance of « ALPS Automation » with the Challenge project team. The team is globally satisfied with the services provided by ALPS Automation:

- Professionalism
- Knowledge of Nestlé processes and standards
- Responsiveness and flexibility
- Good relationship with the Nestlé team and the other companies working on the project

The project was completed successfully in line with the deadlines and budget, which are pertinent indicators for us.